



[Home](#) > [Planning & Projects](#) > [Melbourne road projects](#) > **St Kilda Road track maintenance works and road closure**

St Kilda Road track maintenance works and road closure

Location: St Kilda

Type: Road

Status: Underway

Yarra Trams in partnership with the Department of Transport and Planning (DTP) is conducting ongoing maintenance and renewal works across the Melbourne tram network to ensure a safe and reliable tram service for future generations.

Stage One

From 10pm, Wednesday 10 April to 4am, Wednesday 24 April 2024 between Barkly and Inkerman streets.

- From 10pm, Wednesday 10 April to 4am, Wednesday 24 April, St Kilda Road, between Barkly and Inkerman streets will be partly closed for tram track and powerline maintenance and renewal works.

These works are now complete. Thank you for your patience during the works.

Stage Two

From 5am, Monday 6 May to 10pm, Friday 10 May and from 5am, Monday 13 May to 10pm, Friday 17 May:

- There will be one lane of traffic running to and from city on St Kilda Road between Inkerman and Carlisle Streets under traffic management

This website uses cookies to ensure you get the best experience on our website. [Learn More](#)

OK

- There will be a full kerb to kerb closure of St Kilda Road between Inkerman and Carlisle streets.

About these works

The tram tracks on St Kilda Road, between Barkly and Carlisle streets, have reached the end of their life cycle. To continue to deliver a safe and reliable tram service to the area, these tram tracks must be replaced. We will also be upgrading tram poles and powerlines.

St Kilda Road, between Barkly and Carlisle streets, St Kilda, will have disruptions, including a full road closure in Stage 2.

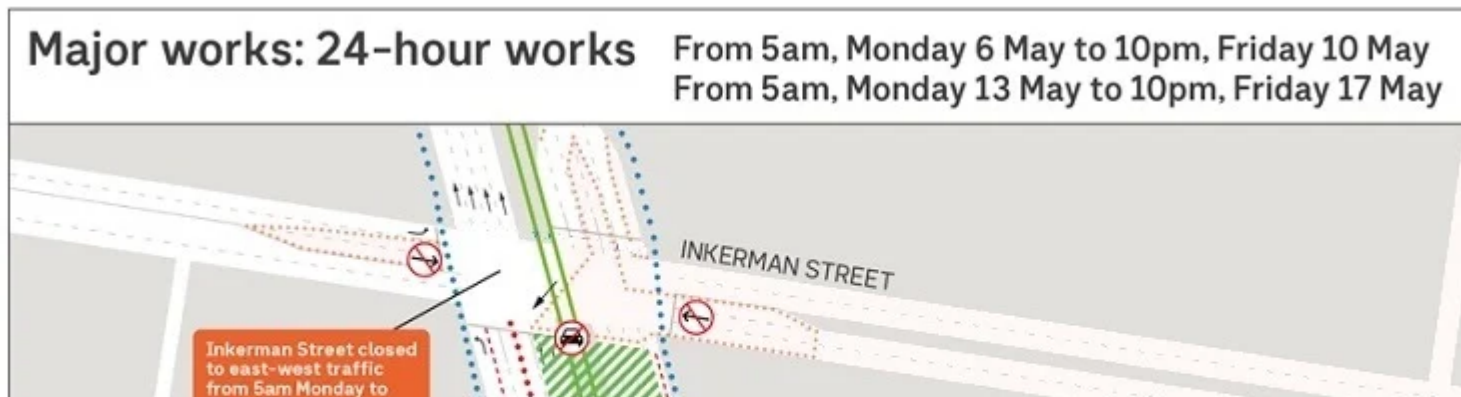
What to expect

24-hour works

- Full kerb to kerb road closures and fencing
- Extremely high levels of noise
- Detours for bike riders, pedestrians and traffic
- Service changes to tram routes 3, 16 and 67. Visit [Yarra Trams website](#) .

We appreciate your patience while these works are completed.

Stage Two



This website uses cookies to ensure you get the best experience on our website. [Learn More](#)

OK



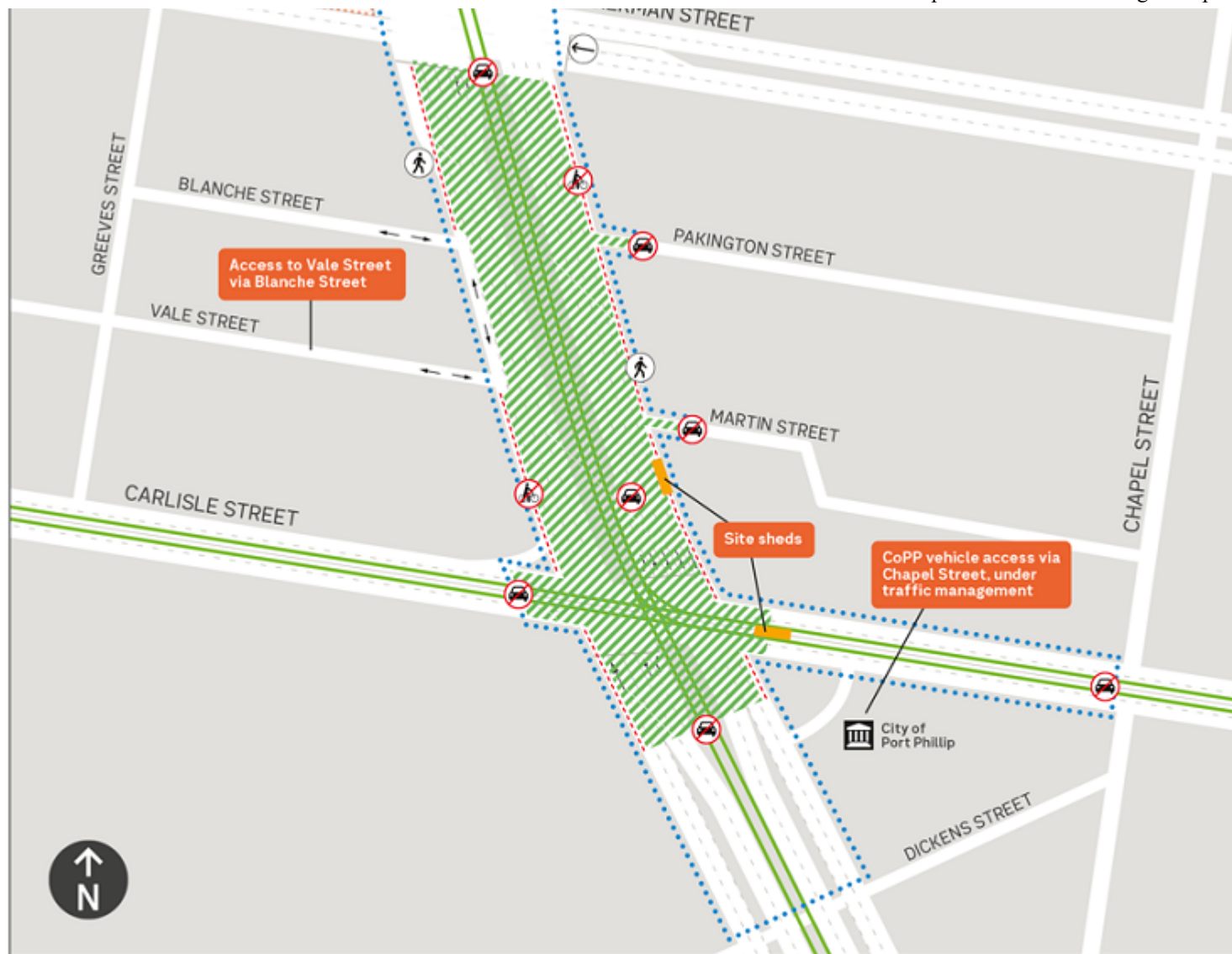
Key

 Major works area	 East-west closed	 Bike lanes closed
 Lane closure	 Left turn	 Footpaths open around works area
 East-west open		







Major works: 24-hour works From 10pm, Friday 3 May to 5am, Monday 6 May
 From 10pm, Friday 10 May to 5am, Monday 13 May

This website uses cookies to ensure you get the best experience on our website. [Learn More](#)

OK



Key

 Major works area	 East-west closed	 Bike lanes closed
 Footpaths open around	 Footpaths open around	 Footpaths open around

This website uses cookies to ensure you get the best experience on our website. [Learn More](#)

OK

Getting around

Stage Two

From 10pm, Friday 3 May to 4am, Monday 20 May 2024 between Inkerman and Carlisle streets

- **From 5am, Monday 6 May to 10pm, Friday 10 May and from 5am, Monday 13 May to 10pm, Friday 17 May:**
 - There will be one lane of traffic running to and from city on St Kilda Road between Inkerman and Carlisle Streets under traffic management. To allow this movement, Inkerman Street will be closed to east-west traffic during this time.
 - Access to Vale Street via St Kilda Road.
- **From 10pm, Friday 3 May to 5am, Monday 6 May, from 10pm, Friday 10 May to 5am, Monday 13 May and from 10pm, Friday 17 May to 5am, Monday 20 May:**
 - Full kerb to kerb closure of St Kilda Road between Inkerman and Carlisle streets.
 - The intersection of Carlisle Street and St Kilda Road will be closed.
 - The intersection of Inkerman Street and St Kilda Road will be open to east-west traffic.
 - Access to Vale Street via Blanche Street under traffic management.
 - On-street parking, bike lanes and some side streets will be closed within the work area for materials storage.

To support you to move around the area during works, traffic management and signage will direct traffic and pedestrians.

We recommend that road users allow extra travel time for their journey.

Pedestrians

Footpaths will be open around the works area. There may be temporary footpath closures around the works, with local detours in place.

Pedestrian crossings are located at the following intersections

- On St Kilda Road at Argyle Street

This website uses cookies to ensure you get the best experience on our website. [Learn More](#)

OK

Follow the signage in the area to locate your nearest crossing.

Tram

There will be service changes to tram routes 3, 16 and 67. Visit [Yarra Trams website](#) .

Bus

Bus routes 246 and 623 will be impacted. Visit [PTV website](#) .

Local business

The businesses located around the works will remain open. Please continue to support local businesses during these essential works. Pedestrian access to these businesses will remain open at all times.

Get in touch

For more information, please call the VicRoads Call Centre on [13 11 71](#) (TTY [13 36 77](#), Speak and Listen [1300 555 727](#)).

For more detailed information about the works, visit [Yarra Trams website](#) .